

---

# FAN-ASSISTED DISTRIBUTOR HEADS for ES-MINI

---



---

Use and maintenance manual

---

ENGLISH

**READ AND KEEP**

Thank you for choosing the PEGO EASYSTEAM fan-assisted distributor head.

Please read this manual thoroughly: doing so will allow you to carry out correct installation of the unit and use it properly.

It is therefore advisable to store the manual near the fan-assisted distributor head installation point.

How to read this manual:

To simplify and aid comprehension the text is accompanied by the following symbols:



Indicates a section of text that must be read carefully.



Indicates tasks that need to be carried out with the utmost care and attention so as to prevent damage to the distributor head, injury or malfunctions.



Indicates an action that is forbidden and which could cause damage to the distributor head, injury or malfunctions.



Indicates a useful tip.




Indicates that the PEGO - HUMIDIFIER DIVISION assistance centre (contact details on back of this handbook) should be contacted.

### Instructions for disposal:

The humidifier is made up of metal parts and plastic parts. In reference to European Union directive 2012/19/EC issued on 4 July 2012 and the related national legislation, please note that:

- A. WEEE cannot be disposed of as municipal waste and such waste must be collected and disposed of separately.
- B. The public or private waste collection systems defined by local legislation must be used. In addition, the equipment can be returned to the distributor at the end of its working life when buying new equipment.
- C. The equipment may contain hazardous substances: the improper use or incorrect disposal of such may have negative effects on human health and on the environment.



- D. The symbol  (crossed-out wheeled bin) shown on the product and on the user manual indicates that the equipment has been introduced onto the market after 13 August 2005 and that it must be disposed of separately.
- E. In the event of illegal disposal of electrical and electronic waste, the penalties are specified by local waste disposal legislation.

## CONTENTS

### INTRODUCTION

**CHAP. 1**

Page 4	1.1	General
Page 4	1.2	Warranty terms and conditions
Page 4	1.3	Operating principle
Page 5	1.4	Fan assisted head id codes
Page 5	1.5	Technical data
Page 5	1.6	Overall dimensions
Page 6	1.7	Identification data
Page 6	1.8	Items supplied as standard

### INSTALLATION

**CHAP. 2**

Page 6	2.1	General installation information
Page 7	2.2	Standard installation
Page 8	2.3	Electrical connection

### SWITCHING

**CHAP. 3**

Page 9	3.1.	Initial start-up
--------	------	------------------

### TROUBLESHOOTING

**CHAP. 4**

Page 9	4.1	Troubleshooting
--------	-----	-----------------

### APPENDICES

**CHAP. 5**

Page 10	5.1	EU declaration of conformity
Page 11	5.2	Exploded diagram

## CHAP. 1 INTRODUCTION

### 1.1

#### GENERAL

The Pego Easystem fan-assisted distributor head has been designed to allow direct humidification of indoor environments without the need for air ducts or evaporators; ventilation can be achieved by fitting the head directly on the humidifier or placing it in a 'remote', wall-mounted position.

### 1.2

#### WARRANTY TERMS AND CONDITIONS

Accessories of the **EASYSYSTEM** product line are guaranteed against manufacturing defects for a 24-month period that begins on the date of delivery. Improper performance caused by tampering, impact/knocks, improper installation or utilisation with equipment not belonging to the **EASYSYSTEM** line shall automatically render the warranty null and void. It is strongly recommended that you observe all instructions/information regarding the technical characteristics of the device.



Any modifications made to wiring and/or internal components or any tasks carried out in a way that fails to comply with the information/instructions in this manual shall not only render the warranty null and void immediately but may also lead to malfunctions, irreparable damage, serious injury or put persons/objects in danger.

PEGO S.r.l. declines any responsibility for possible errors or inaccuracies written in this manual as a result of printing or transcription errors.

PEGO S.r.l. reserves the right to modify its products as it deems necessary without altering their main characteristics.

Each new release of a PEGO user manual replaces previous ones.

### 1.3

#### OPERATING PRINCIPLE

EASYSYSTEM fan-assisted distributors mix the steam produced by the humidifiers with an airflow generated by a cross-flow fan; this mixture is then introduced into the indoor environment at a speed and rate proportional to the size of the humidifier, thus ensuring an optimal ratio of humidification / efficiency loss caused by the condensation effect.

Ventilation occurs simultaneously with steam production; the shape of the head and the grill pattern prevents direct introduction of condensation water droplets into the environment.

**1.4**

**FAN-ASSISTED HEAD ID CODES**

**400UMFAN80**

Fan-assisted head for Pego EasySTEAM humidifiers  
ES MINI 3-M, ES-MINI 6

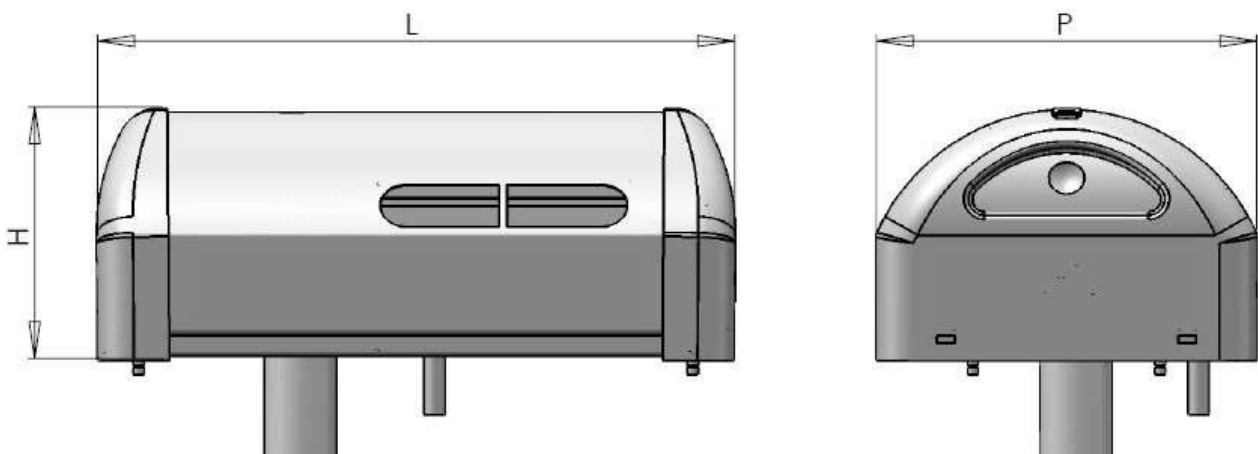
**1.5**

**TECHNICAL DATA**

TECHNICAL DATA	400UMFAN80
STEAM VENTILATION CAPACITY (in Kg/h)	Max 6
POWER SUPPLY	230V 50/60 hz
POWER (kW)	0,02
CONTROL TYPE	<b>EASYSYSTEM ES-MINI</b>
STEAM INLET DIAMETER (mm)	25
CONDENSATE DISCHARGE OUTLET DIAMETER (mm)	10
AIRFLOW RATE	80 m <sup>3</sup> /h

**1.6**

**OVERALL DIMENSIONS**



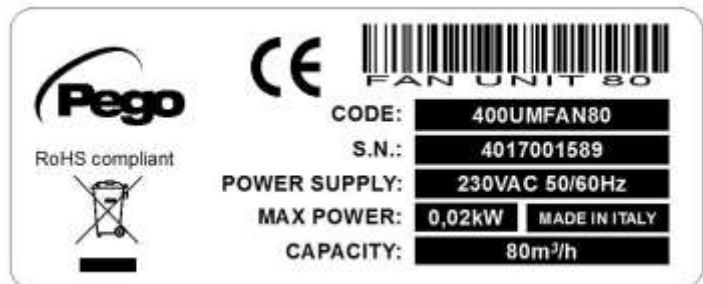
MODEL	L	P	H
<b>400UMFAN80</b>	310 mm	186 mm	123 mm

## 1.7

## IDENTIFICATION DATA

The unit described in this manual has, on its side, an ID plate showing all the relevant identification data:

- Name of Manufacturer
- Code of the unit
- Serial number
- Power supply
- Max power
- Air capacity



## 1.8

## ITEMS SUPPLIED AS STANDARD

EASYSTEAM fan-assisted distributor heads come complete, for purposes of assembly and use, with:

- N° 1 silicone pipe with an internal diameter of 25 mm, for steam inlet
- N° 1 connector with an external diameter of 10 mm, for condensate discharge
- N° 1 condensation discharge pipe
- N° 2 metal clamps for steam and condensate discharge pipe
- N° 1 user's manual.

## CHAP. 2 INSTALLATION

## 2.1

## GENERAL INSTALLATION INFORMATION



1. Install the unit with Pego Easystem ES-MINI humidifiers only.
2. Install the unit so it is level in both the transverse and longitudinal planes.
3. When installing the device make sure the airflow is not directed at electronic equipment or other equipment sensitive to high humidity.

## 2.2

## STANDARD INSTALLATION OF DISTRIBUTOR HEAD

1. Remove the fan-assisted distributor head from the packaging, keeping the device vertical. Remove the protective nylon bag and check that the device is in good condition.
2. Remove the stainless steel cover of the humidifier by turning the 2 locks on each side. (**Fig. 1**),

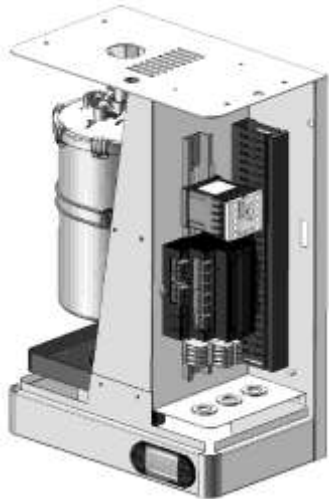


Fig. 1

3. Check that the humidifier is level both transversely and longitudinally; correct any tilt.
4. Place the head on top of humidifier, insert steam pipe, drain pipe and power cable in the hole. (**Fig. 2**).
5. After entering the steam pipe in its place and the drain pipe in the cylinder head, fix the metal clamps supplied on two pipe. (**Fig. 3**).

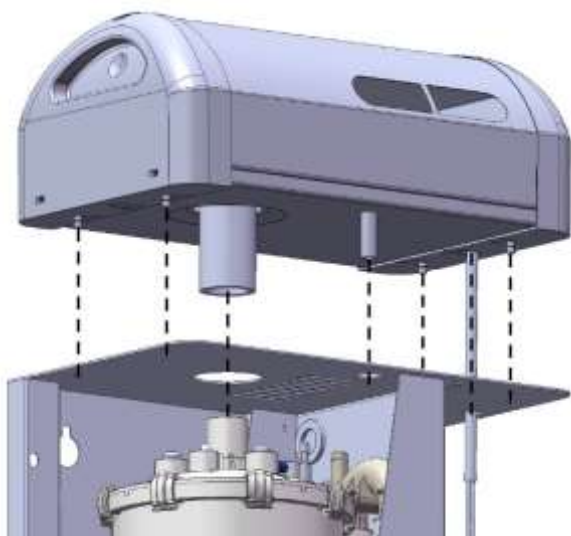


Fig.2

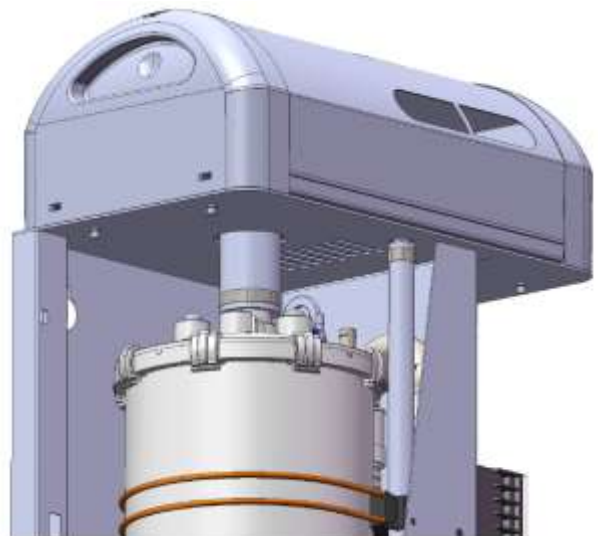
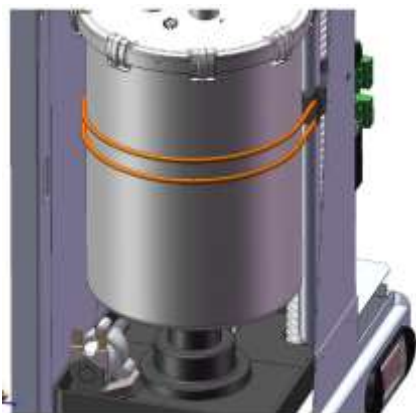


Fig. 3

- The condensate drain pipe must pass through the hole of the base support in the middle cylinder and must be vacated on the bottom near the cylinder discharge pipe (**Fig.4**).



**Fig. 4**

### 2.3

### ELECTRICAL CONNECTION

Pass the power supply cable of the fan unit through the conduit until it reaches the terminal block (terminals 62-63).

Refer to the humidifier manual for proper connection of the wires in the terminal block.



## CHAP. 3 SWITCHING

### 3.1


#### INITIAL START-UP

At this point the fan-assisted distributor head is ready for use and is fully autonomous. When the humidifier receives consensus for steam production, the head starts to generate the airflow with the requested quantity of steam.

## CHAP. 4 TROUBLESHOOTING

### 4.1

#### TROUBLESHOOTING

FAULT	CAUSE	ACTION TO BE TAKEN
The humidifier generates steam but the head does not produce an outflow	Cross-flow fan stopped	Check for proper connection and power supply
The humidifier generates steam but the head does not produce an outflow	Cross-flow fan stopped despite proper power supply	Check that cross-flow fan is working properly
The head sprays drops of condensate outwards into the room	Head not levelled properly	Check for level installation
The head sprays drops of condensate outwards into the room	Rear intake obstructed	Clean intake
	Should you encounter any other faults not listed in the table please contact the PEGO HUMIDIFIER DIVISION assistance centre	

## CHAP. 5 APPENDICES

### 5.1

### EU DECLARATION OF CONFORMITY

LA PRESENTE DICHIARAZIONE DI CONFORMITA' E' RILASCIATA SOTTO LA RESPONSABILITA' ESCLUSIVA DEL FABBRICANTE:  
 THIS DECLARATION OF CONFORMITY IS ISSUED UNDER THE EXCLUSIVE RESPONSIBILITY OF THE MANUFACTURER:



PEGO S.r.l. Via Piacentina 6/b, 45030 Occhiobello (RO) – Italy –

### DENOMINAZIONE DEL PRODOTTO IN OGGETTO / DENOMINATION OF THE PRODUCT IN OBJECT

- 400UMFAN80

IL PRODOTTO DI CUI SOPRA E' CONFORME ALLA PERTINENTE NORMATIVA DI ARMONIZZAZIONE DELL'UNIONE EUROPEA:  
 THE PRODUCT IS IN CONFORMITY WITH THE RELEVANT EUROPEAN HARMONIZATION LEGISLATION:

Direttiva Bassa Tensione (LVD):	<b>2014/35/UE</b>
Low voltage directive (LVD):	<b>2014/35/EU</b>
Direttiva EMC:	<b>2014/30/UE</b>
Electromagnetic compatibility (EMC):	<b>2014/30/EU</b>

LA CONFORMITA' PRESCRITTA DALLA DIRETTIVA E' GARANTITA DALL'ADEMPIMENTO A TUTTI GLI EFFETTI DELLE SEGUENTI NORME:  
 THE CONFORMITY REQUIRED BY THE DIRECTIVE IS GUARANTEED BY THE FULFILLMENT TO THE FOLLOWING STANDARDS:

Norme armonizzate:	<b>EN 60335-1:2012, EN 61000-6-1:2007, EN 61000-6-3:2007</b>
European standards:	<b>EN 60335-1:2012, EN 61000-6-1:2007, EN 61000-6-3:2007</b>

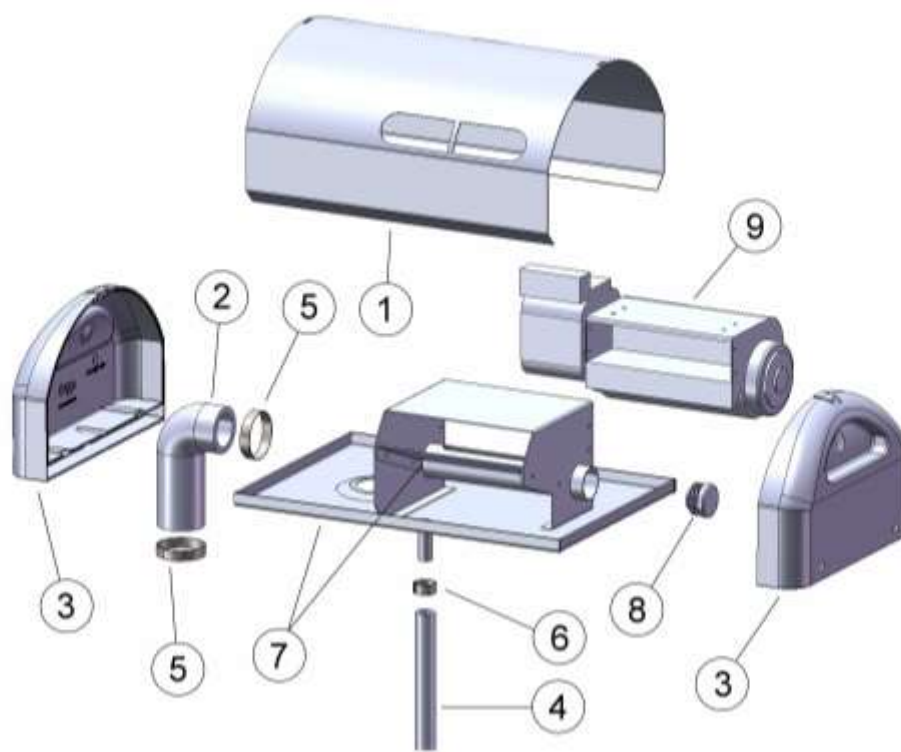
IL PRODOTTO E' COSTITUITO PER ESSERE INCORPORATO IN UNA MACCHINA O PER ESSERE ASSEMBLATO CON ALTRI MACCHINARI PER COSTITUIRE UNA MACCHINA CONSIDERATE DALLA DIRETTIVA: 2006/42/CE "Direttiva Macchine".  
 THE PRODUCT HAS BEEN MANUFACTURED TO BE INCLUDED IN A MACHINE OR TO BE ASSEMBLED TOGETHER WITH OTHER MACHINERY TO COMPLETE A MACHINE ACCORDING TO DIRECTIVE: EC/2006/42 "Machinery Directive".

Firmato per nome e per conto di:  
 Signed for and on behalf of:

Luogo e Data del rilascio:  
 Place and Date of Release:

Occhiobello (RO), 01/01/2020

Pego S.r.l.  
 Martino Villa  
 Presidente



Ref.	Art.	Description
1	UMITVLB14	Stainless steel cover
2	UMICURVA90°UL	Connecting pipe, humidifier - head fan
3	UMITESTVEN1	Head fan cover in atoxic ABS for high temperature
4	UMITUBODN10	Condensation discharge pipe
5	UMIFAS2540	Inox clamp for steam pipe
6	UMIFAS1518	Inox clamp for condensation discharge pipe
7	UMITVLB10-1-2-3	Complete stainless steel base
8	UMITAPPO25	Plug D 25 steam distributor
9	UMIVENT80	Tangential fan 230V, 80 m <sup>3</sup> /h



**PEGO s.r.l.**  
**Via Piacentina, 6/b 45030 Occhiobello ROVIGO – ITALY**  
**Tel. +39 0425 762906 Fax +39 0425 762905**  
**e-mail: [info@pego.it](mailto:info@pego.it) – [www.pego.it](http://www.pego.it)**



**ASSISTANCE SERVICE**  
**Tel. +39 0425 762906 e-mail: [tecnico@pego.it](mailto:tecnico@pego.it)**

Dealer: